

Information of product

Jumper 550

price 35000 PLN netto



MaWaMed is the biggest producer of micro class yachts in Poland. We have a pleasure to present our main product - Jumper 550. The composites of the hull are based on the best gel coats and construction resins from Scott Bader. The laminates are reinforced by oriented biaxial, triaxial or quatriaxial fiberglass fabric from Formax. Strong and rigid deck is obtained due to application of the newest technologies including fixing distance pieces by vacuum method. In the interior part classical wood plates are partly substituted by laminates with honeycomb structure that allows for higher stiffness and resistance with reduced weight.



Juxtaposition of accessories and endowments of yachts Jumper 550

I. Drop keel weight 120 kg easy coming up with the aid of elevator (reduction ratio 1:10)

II. Helm rudder with aluminum yoke and hand tiller

III. Moving ferrules

1. halyard jib(rope 8)
2. halyard mainsail(rope 8)
3. halyard spinnaker(rope 8)
4. sheet jib(rope 10)
5. braces spinnaker (rope 7)
6. kicking spinnakerboom (rubber 8, rope 6)
7. mainsail tackle
 - rope 10-12 typ M
 - single block with catch
 - single block hanging 2 item
 - block standing
8. kicking strap
 - double block
 - double block
9. bow line 15m (rope 10)
10. drop keel halyard (rope 10)
11. boom 2,65m
12. mast 7,70m
13. standing rigging with screw
14. sails (according documentation)
 - mainsail 11,7m
 - jib 6,8m
 - spinnaker 19,5m
15. spinnakerboom 2,25m
16. balast strip width tape 50mm
17. stirrups



Additional

- shoot system spinnakerboom
- jib roller gear
- standing balast strips
- bags for spinnaker

IV. Metal ferrules (fig.1)

1. bow basket
2. stay catch
3. chain plate
4. mast base
5. helm catch
6. security eye (size 8)
7. eyeplate
8. chain balast strip
9. groove flap
10. and 11. sliding keel winch
- X. Pillar

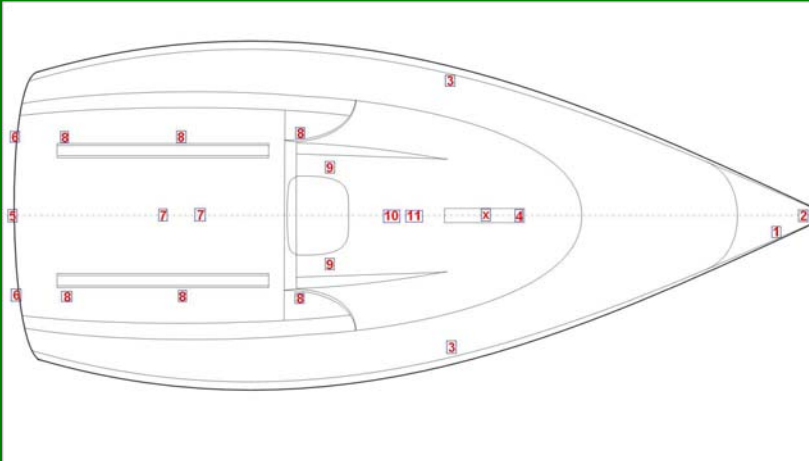


Fig.1



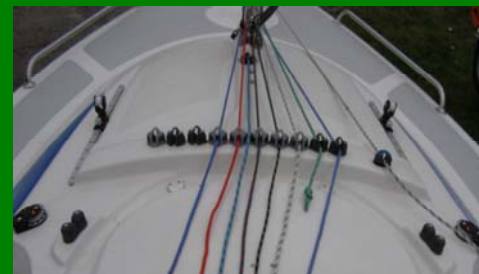
Additional:

1. mast support
2. rails
3. stern half basket
4. suport for mainsail takle table



V. Deck ferrules (fig.2)

1. block outhaul fore lech jib
2. eye outhaul fore lech jib
3. cam cleat outhaul fore lech jib
4. block halyard spinnaker
5. cam cleat halyard spinnaker
6. block braces spinnaker return
7. block braces spinnaker standing
8. cam cleat braces spinnaker
9. block sheet jib
10. cam cleat sheet jib
11. cam cleat outhaul fore lech mainsail
12. block return outhaul mainsail
13. cam cleat kicking strap
14. cam cleat drop keel halyard
15. car sheet for rail 18mm
16. sheet rail 18mm 0,5m
17. block kicking spinnakerboom
18. cam cleat kicking spinnakerboom



Additional

mainsail takle table

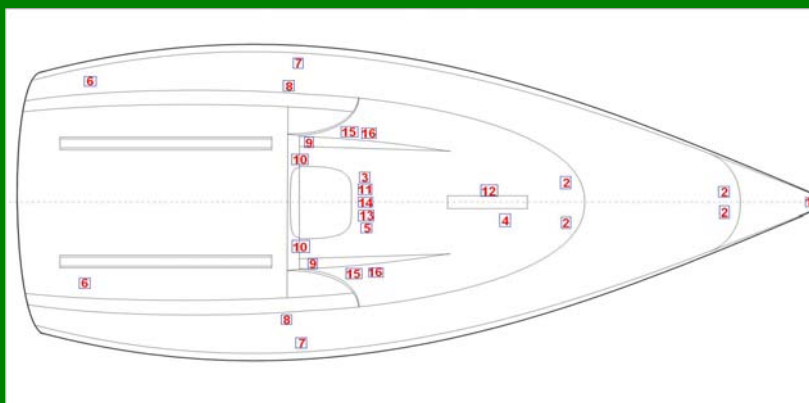


Fig.2



VI. Endowment of inferior:

1. front bed
2. double bed under deck
3. two cases
4. mattresses in artificial skin(sponge PV gr. 40)



Additional:

- laminate under ceiling
- swallows.
- finish in timber.
- soft finish of broadside.
- thickest sponge
- mattresses in fabric



**We offer other yachts
We invite to visit our web site**

WWW.mawamed.pl

Headquarters:

**Ul. Sikorskiego 110
Radzionkow
41-922
Poland**

mawamed@interia.pl

Studio:

**ul. Teligi 2
Chelm Slaski
41-403
Poland**

**+48 601-195-066
+48 697-645-238**

JUMPER 550

